

10W 16X15 IP67 24V Neon Flex

TECHNICAL

Watts Per Metre	10w/15w
Input Voltage	24v DC
Colour Temp	3000/4000/6000K
Beam Angle	120°
IP Rating	IP67
Size	16mm (W) x 15mm (H) (not including end cap)
Bending Radius	300mm
CRI	>90
Lamp Expectancy	>50,000hrs
Wiring	Parallel
Dimmable	Yes
LED Chip Type	2835
Max Run (2 power feed)	10/34m
Roll Length	10/30m
Cutting Increments	50mm
Mounting	Aluminium Profile clips and bendable profile
Operating Temperature	0 - + 60° Celcius
Ambient Temperature	-20° - + 50° Celcius
Warranty	3 Years Replacement



COMPATIBLE CONTROLLERS



SMART 5 IN 1 CONTROLLER



LED CONTROLLER



REMOTE CONTROLLER



PIR SENSOR STAIR LIGHT CONTROLLER

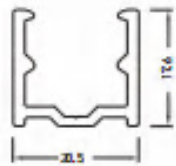
COMPATIBLE CONTROLLERS

Image	Part Number	Colour Temp	Lumens	Description
	TLI-NL16153D24-3000k	3000k	539lm	3D Bend
	TLI-NL1615V24-3000-6000k	3000-6000k	539-570lm	Top Bend
	TLI-NL1615V24-RGB-W(3000K)	RGB+3000K	365lm	Top Bend

Image	Part Number	Description
	TLI-NL1615V24-CLIPS	clips
	TLI-NL1615V24-CHANNEL	2 meters
	TLI-NL1615V24-bandable channel	per meter

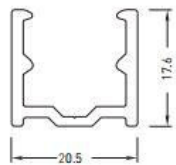
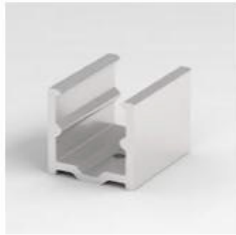
10W 16X15 IP67 24V Neon Flex

Aluminium Profile

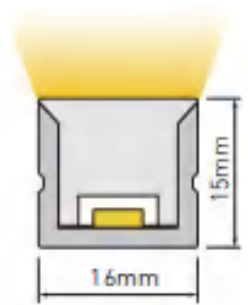
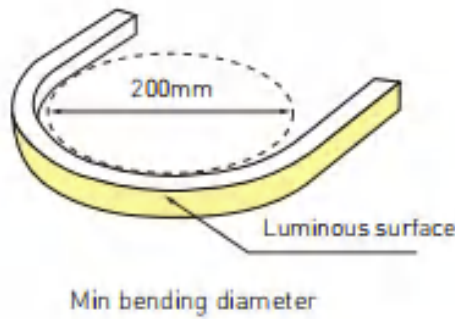
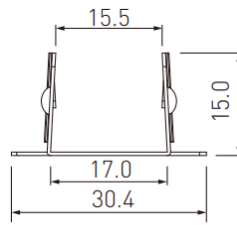


Dimension:
1000x20.5x17.6

Aluminium Mounting clips



Dimension:
20x20.5x17.6



Dimension

